



# Welcome to Shakespeare in Yosemite 2022: Love's Labor's Lost!

In spring 2020, we planned to honor the 50th anniversary of Earth Day with this show. Rehearsals began, COVID arrived, and we feared our labors may well be lost. It has been a difficult two years, and we return to the park with, in the words of the play “honest words [that] best pierce the ear of grief.”

This show is set in 1969 and 1970, and reworks Shakespeare's comedy to imagine two bands on songwriting retreat in Yosemite who fall in love with each other and with a world in urgent need of protection. In Shakespeare's original play, a King and his lords swear off love—and even speaking to women—for three years in order to focus on their studies; in ours, the “Kings of Navarre” band swears off love for three months to focus on their music (spoiler alert: neither group is successful). 1969 was an era of wonderful music, and that summer, folks gathered to celebrate it at the Harlem Cultural Festival, and on a farm in Woodstock.

But music festivals weren't the only gatherings of note that summer, as our show represents. It is true that the youth movements of the late 1960s—fueled by music, anger, and hope—catalyzed that first Earth Day in 1970, and that those April 22nd gatherings prompted President Nixon to establish the Environmental Protection Agency later that year. The passage of several US congressional acts to safeguard the creatures of our precious planet, human and non-human, from pollution and extinction followed: updating the Clean Air Act in 1970, passing the Clean Water Act and Endangered Species Act in 1972 and 1973.

This was also an era when Latino farmworkers were protesting pesticide exposure and low wages, when Black Americans continued fighting for their rights, when LGBTQ Americans rioted at Stonewall Inn (1969) and organized the first Pride parade (1970), and when people across the globe cried out for peace. These were labors of love, for each other and for the planet: our show is inspired by the youth of yesterday, the “Boomer” generation. We also honor the youth of today, who march and sing and organize for a safer and more just future for us all. May their labors not be lost.

This weekend's shows are being made into a film that will be released later this spring: subscribe to our YouTube channel and you'll be sure not to miss it. You can also get updates about our future endeavors by following us on Instagram @yosemiteshakes

Thank you for your support of live theatre in Yosemite National Park!





# MEET THE CAST:

## THE KINGS OF NAVARRE



### **Barry Berowne: Tonatiuh Newbold**

Tona works for Yosemite Hospitality and is a former UC Merced student. For Shakespeare in Yosemite, he played Lysander in *Midsummer Night's Dream*, Amiens in *As You Like It*, and Leo in the film *Imogen in the Wild*.

### **Ferdinand Franks: Christian Michael Smith**

Christian is a post-doctoral scholar in sociology at UC Merced conducting research in education and inequality, and he has a PhD in the subject from University of Wisconsin.



### **Danny Dumaine: Andrew Hardy**

Andrew is a graduate of UC Merced's English program and now works for Mid-Valley Publications and Playhouse Merced. For Shakespeare in Yosemite, he played Orlando in *As You Like it* and appeared in *Imogen in the Wild*.





# MEET THE CAST:

## THE SIERRA GIRLS



### **Rosaline: Sofia Andom**

Sofia is a senior English major at UC Merced and she starred as Imogen in Shakespeare in Yosemite's film *Imogen in the Wild*.



### **Princess: Bethy Harmelin**

Bethy is a Merced mom, educator, and baker, and she starred as Rosalind in Shakespeare in Yosemite's *As You Like It*. She has a degree in Music Performance from UC Santa Barbara.



### **Katharine: Cat Flores [Cat]**

Cat is a senior English major at UC Merced and is heading off to get her PhD at UC Davis next year. She also records music under the stage name KATT (her EP is on Spotify). She wrote and performed music for Shakespeare in Yosemite's *As You Like It* and *Imogen in the Wild*.

### **Maria: Bella Camfield**

Bella is a 10th grade humanities teacher at Aspire Ollin University Prep in Southeast LA, and has a BA in English and Theatre from Occidental college and an MA in Education from University of the Pacific. She sang in *Imogen in the Wild*.





# MEET THE CAST:



## **Custard: Anne Schwartzberg**

Anne is a third year Management major at UC Merced, and is making her Shakespeare in Yosemite debut. But she is no stranger to the stage!

## **Dr. Lou Holofernes: Tawanda Chabikwa**

Tawanda is an artist-scholar and assistant professor of theatre and dance and of African-American studies at University of Texas-El Paso, where he researches and teaches Black and Africana dance practices. He appeared in Shakespeare in Yosemite's As You Like It and had a cameo in Imogen in the Wild.



## **Ranger Marion: Marion Roubal**

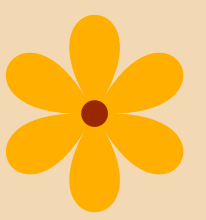
Marion is a real NPS ranger in Yosemite, where she works in the Public Information and Interpretation offices.

**Special guest: Juan Cerda**





# BEHIND THE SCENES



## **ADAPTORS AND DIRECTORS: KATIE BROKAW AND PAUL PRESCOTT**

Katie and Paul are on the English faculty at UC Merced, where they both teach and write about theatre and Shakespeare. They are the co-founders of Shakespeare in Yosemite.



## **MUSIC DIRECTOR: TONATIUH NEWBOLD**



## **DESIGNERS: MAHEA LAROSA & GRACE GARNICA**

Mahea and Grace are seniors at UC Merced, where Mahea is majoring in English and Grace in Global Arts Studies. They are coordinators of the Young Artists Movement on campus.

## **PRODUCTION ASSISTANTS: ISAAC GÁLLEGOS RODRIGUEZ, HANNAH MAULDEN & SHABNAM SHIRZAD**

Isaac is a senior English major and Hannah and Shabnam are Interdisciplinary Humanities graduate students at UC Merced.





# BEHIND THE SCENES

## **COSTUME AND PROP ASSOCIATES: PAJA YANG AND ELIZABETH AVILES**



Paja and Elizabeth are both 3rd year English majors at UC Merced.



## **STAGE MANAGER: JULISSA MURILLO**

Julissa is a 4th year Public Health major at UC Merced.



## **PHOTOGRAPHY AND GRAPHICS: DARAH CARILLO VARGAS**

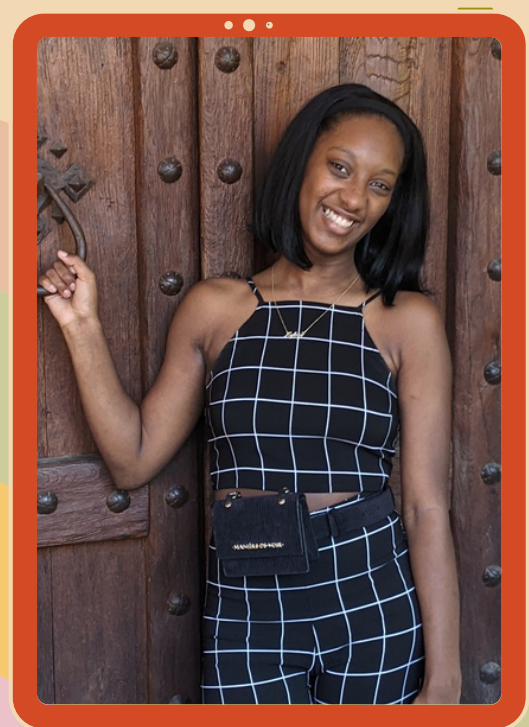
Darah is a 3rd year English major at UC Merced.

## **SOCIAL MEDIA COORDINATOR: CARA HILL**

Cara is a 3rd year Computer Science and Engineering major at UC Merced.

## **PROGRAM DESIGN: KYLEY TATE**

Kyley is a senior Management and Business Economics major at UC Merced.





# FOR THE FILM:

## **DIRECTOR OF PHOTOGRAPHY: SHAWN OVERTON**

Shawn Overton is a Merced-area writer, photographer, and filmmaker, and holds an MFA in Playwriting from University of Nevada-Las Vegas. He was the DOP for Imogen in the Wild.

## **SOUND DIRECTOR: WILL DARPINIAN**

Will is an English major student at UC Merced, and was the sound director and a film editor on Imogen in the Wild.



## **CAMERAPERSON: WILL SERG GEORGE**



## **FILM EDITORS: MARTIN ARREDONDO, WILL DARPINIAN, DIANGELICA GOMEZ, AND WIN TEAVER**

Martin, Will, Diangelica, and Win are all UC Merced students, majoring in Political Science, English, and Biological Sciences.

# SUPPORT IN THE YOSEMITE:

**SCOTT GEDIMAN,  
PUBLIC AFFAIRS OFFICER FOR NPS YOSEMITE**

**BRYAN HAMMILL,  
CURRY VILLAGE GENERAL MANAGER**

# SPONSORS:





## Thank You:

Ranger Scott Gediman, Weston Spiegl and Erin Callahan with Yosemite Hospitality, UC Merced Office of the Chancellor, Brian Baker, Jonny Heron and Ben Hickman, Asynith Palmer, GB Blackmon and Playhouse Merced, Derek and Robin Banks, Mariposa Gazette, Lorena Anderson and Juan Flores, Jenni Samuelson and Jayson Beaster-Jones and Global Arts Studies at UC Merced

## Shakespeare in Yosemite is a proud member of:



*In what is today called Yosemite, the people now known as the Bishop Paiute Tribe, the Bridgeport Indian Colony, the Mono Lake Kutzadika Tribe, North Footh Rancheria of Mono Indians, Picayune Rancheria of Chukansi Indians, Southern Sierra Miwuk Nation, and the Tuolumne Band of Me-Wuk Indians have stewarded the sweeping vistas, river systems, plants, wildlife, and living areas for thousands of years, and they continue to do so.*

*Shakespeare in Yosemite is grateful to these many indigenous people who have called and do call Yosemite home, including the Ahwahneechee, whose village was dismantled in 1969, the year our show was set; starting in 2018, efforts have been underway to rebuild the village, and the NPS now collaborates with many indigenous communities.*

